

RESOLUTION NO. 03-76

**RESOLUTION CREATING RURAL SPECIAL IMPROVEMENT MAINTENANCE  
DISTRICT TO BE KNOWN AS R.S.I.D. #695M  
LITTLE DUDES RANCHETTES SUBDIVISION-PARKS AND WEEDS**

WHEREAS, the Board of County Commissioners of Yellowstone County, Montana, met in regular session and executed a Resolution of Intent to Create a Rural Special Improvement Maintenance District #695M for Little Dudes Ranchettes Subdivision-Parks, as described in Exhibit A and more particularly shown in Exhibit B (map) and,

WHEREAS, the Clerk and Recorder published the Notice of the passage of Resolution of Intent to Create the District in the Billings Gazette on June 13<sup>th</sup> and June 20<sup>th</sup>, 2003, and mailed a copy of the Notice to every person, firm or corporation owning property in the District; and,

WHEREAS, the Board of County Commissioners finds, determines and declares that:

1. The public interest or convenience requires the creation of a Rural Special Improvement Maintenance District as hereinafter described;
2. The costs of providing maintenance shall be borne by owners of the property included within the boundaries of the Rural Special Improvement Maintenance District with all existing and future lots being assessed an equal amount on a per lot basis;
3. The purpose of forming the District is to provide for the control of noxious weeds and for the maintenance of park property located within the boundaries of this District;
4. The Commissioners have been presented with a valid Petition to create the proposed District;

NOW, THEREFORE, BE IT RESOLVED by the Board of County Commissioners of Yellowstone County as follows:

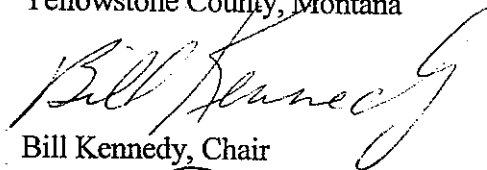
1. The Commissioners have acquired jurisdiction to create a Rural Special Maintenance District No. 695M to provide for the control of noxious weeds and for the maintenance of park property.
2. All of the costs of the District shall be assessed equally on a per lot basis for all existing and future lots. (See Exhibit E.) The boundaries of this District are shown on the map attached as Exhibit B and described in Exhibit A.
3. The number of the Rural Special Maintenance District thereof shall be No. 695M.

4. All lots will benefit from proposed R.S.I.D. and shall be assessed for control of noxious weeds and for the maintenance of park property. All lots will be assessed an equal amount based upon the total cost of the maintenance.

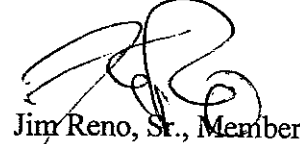
PASSED AND ADOPTED by the Board of County Commissioners of Yellowstone County, Montana, this 8<sup>th</sup> day of July, 2003.

Board of County Commissioners  
Yellowstone County, Montana

(SEAL)

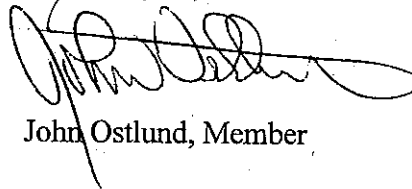


Bill Kennedy, Chair



Jim Reno, Sr., Member

ATTEST:



John Ostlund, Member



Tony Nave  
Clerk and Recorder

# EXHIBIT A

## RESOLUTION OF INTENTION TO CREATE R.S.I.D. #695M (LITTLE DUDE RANCHETTE SUBDIVISION-PARKS)

### LEGAL DESCRIPTIONS

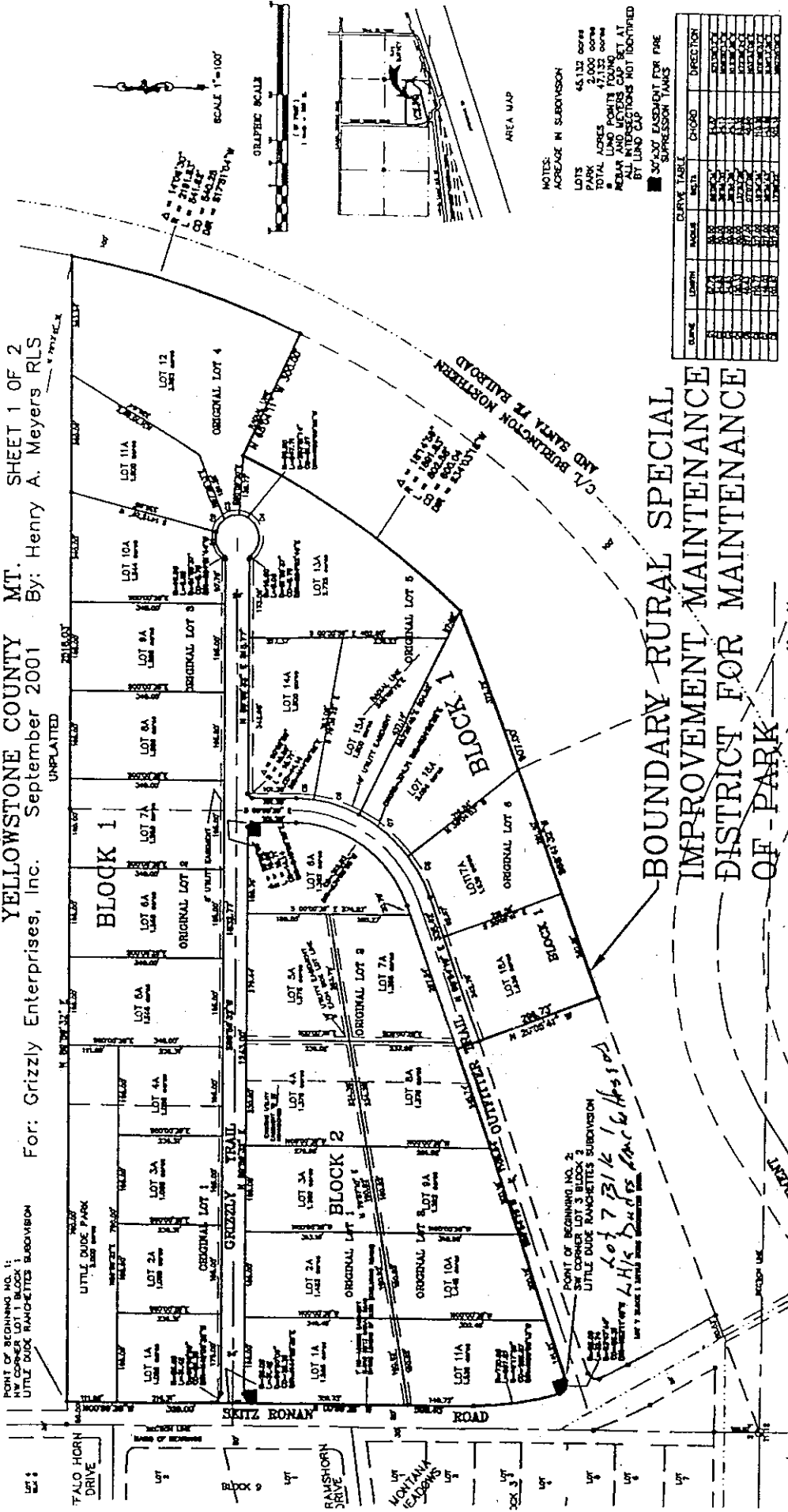
Lots 1A, 2A, 3A, 4A, 5A, 6A, 7A, 8A, 9A 10A, 11A, 12, 13A, 14A, 15A, 16A,  
17A, 18A Block 1;

Lots 1A, 2A, 3A, 4A, 5A, 6A, 7A, 8A, 9A, 10A, 11A Block 2

Little Dude Ranchette Amended

LITTLE DUDE RANCHETTES SUBDIVISION AMENDED  
 AMENDING LOT 1 THRU LOT 6 BLOCK 1 AND LOT 1 THRU LOT 3 BLOCK 2  
 LOCATED IN SW 1/4 SECTION 1, T.2S., R.24E., P.M.M.

YELLOWSTONE COUNTY MT. SHEET 1 OF 2  
 For: Grizzly Enterprises, Inc. September 2001 By: Henry A. Meyers RLS



BOUNDARY RURAL SPECIAL  
 IMPROVEMENT MAINTENANCE  
 DISTRICT FOR MAINTENANCE  
 OF PARK EXHIBIT "B"



# EXHIBIT A

## RESOLUTION OF INTENTION TO CREATE R.S.I.D. #695M (LITTLE DUDE RANCHETTE SUBDIVISION-PARKS)

### LEGAL DESCRIPTIONS

Lots 1A, 2A, 3A, 4A, 5A, 6A, 7A, 8A, 9A 10A, 11A, 12, 13A, 14A, 15A, 16A,  
17A, 18A Block 1;

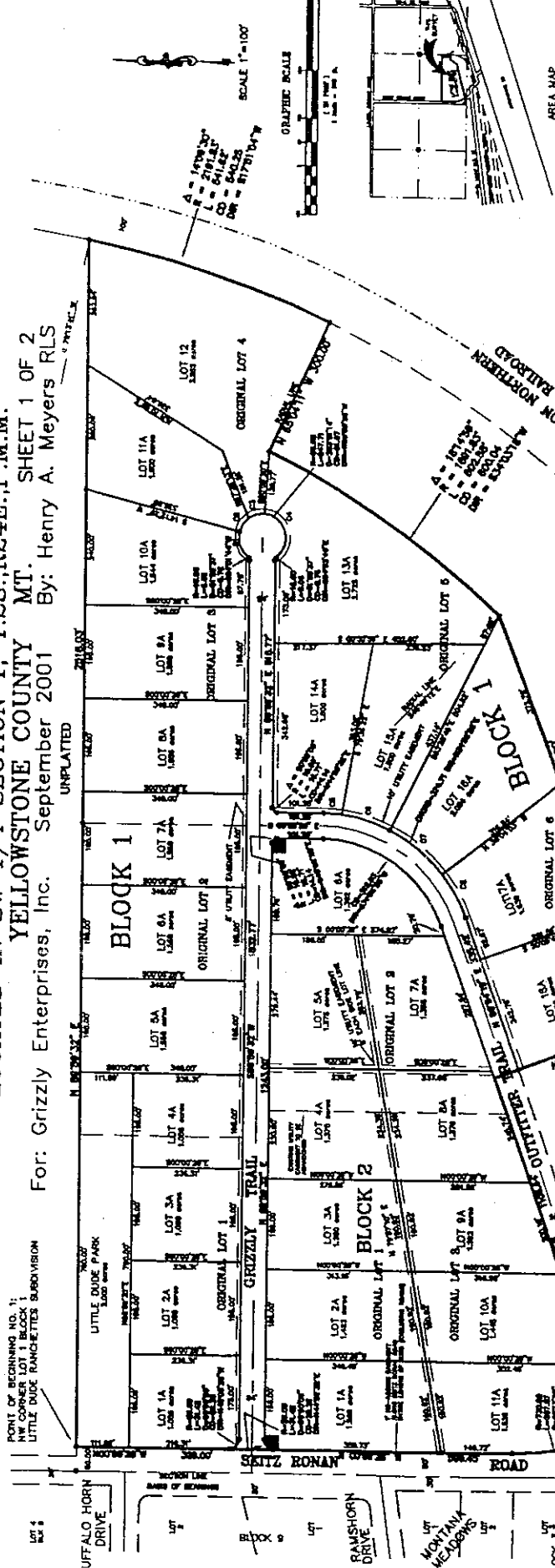
Lots 1A, 2A, 3A, 4A, 5A, 6A, 7A, 8A, 9A, 10A, 11A Block 2

Little Dude Ranchette Amended

**LITTLE DUDE RANCHETTES SUBDIVISION AMENDED  
AMENDING LOT 1 THRU LOT 6 BLOCK 1 AND LOT 1 THRU LOT 3 BLOCK 2  
LOCATED IN SW 1/4 SECTION 1, T.2S., R.24E., P.M.M.**

For: Grizzly Enterprises, Inc. September 2001 By: Henry A. Meyers RLS  
SHEET 1 OF 2

POINT OF BEGINNING NO. 1:  
LITTLE DUDE RANCHETTES SUBDIVISION



NOTES:  
ADCREASE IN SUBDIVISION  
LOTS 45,132 ACRES  
PAIR 47,132 ACRES  
TOTAL ACRES 47,132 ACRES  
LAND POINTS FOUND AT  
REAR AND WEYERS CAP SET AT  
BY LAND SURVEYORS NOT IDENTIFIED

SCALE EXPANDED FOR THE  
EXPRESSION PLANS

| CURVE | LENGTH | ANGLE | BEITS  | CHORD  | DIRECTION  |
|-------|--------|-------|--------|--------|------------|
| 1     | 177.84 | 90.00 | 177.84 | 177.84 | S 90.00° E |
| 2     | 177.84 | 90.00 | 177.84 | 177.84 | S 90.00° E |
| 3     | 177.84 | 90.00 | 177.84 | 177.84 | S 90.00° E |
| 4     | 177.84 | 90.00 | 177.84 | 177.84 | S 90.00° E |
| 5     | 177.84 | 90.00 | 177.84 | 177.84 | S 90.00° E |
| 6     | 177.84 | 90.00 | 177.84 | 177.84 | S 90.00° E |
| 7     | 177.84 | 90.00 | 177.84 | 177.84 | S 90.00° E |
| 8     | 177.84 | 90.00 | 177.84 | 177.84 | S 90.00° E |
| 9     | 177.84 | 90.00 | 177.84 | 177.84 | S 90.00° E |
| 10    | 177.84 | 90.00 | 177.84 | 177.84 | S 90.00° E |
| 11    | 177.84 | 90.00 | 177.84 | 177.84 | S 90.00° E |
| 12    | 177.84 | 90.00 | 177.84 | 177.84 | S 90.00° E |
| 13    | 177.84 | 90.00 | 177.84 | 177.84 | S 90.00° E |
| 14    | 177.84 | 90.00 | 177.84 | 177.84 | S 90.00° E |
| 15    | 177.84 | 90.00 | 177.84 | 177.84 | S 90.00° E |
| 16    | 177.84 | 90.00 | 177.84 | 177.84 | S 90.00° E |
| 17    | 177.84 | 90.00 | 177.84 | 177.84 | S 90.00° E |
| 18    | 177.84 | 90.00 | 177.84 | 177.84 | S 90.00° E |
| 19    | 177.84 | 90.00 | 177.84 | 177.84 | S 90.00° E |
| 20    | 177.84 | 90.00 | 177.84 | 177.84 | S 90.00° E |

**BOUNDARY RURAL SPECIAL  
IMPROVEMENT MAINTENANCE  
DISTRICT FOR MAINTENANCE  
OF PARK EXHIBIT "B"**

POINT OF BEGINNING NO. 2:  
CORNER LOT 3 BLOCK 2  
LITTLE DUDE RANCHETTES SUBDIVISION  
Lot 7 316 1/2 Acres  
L.H. DeFos, Inc. 6/16/2001

LUENSTADT AVENUE

